

WALLBOX TOWER 2FT X 10FT X 2FT

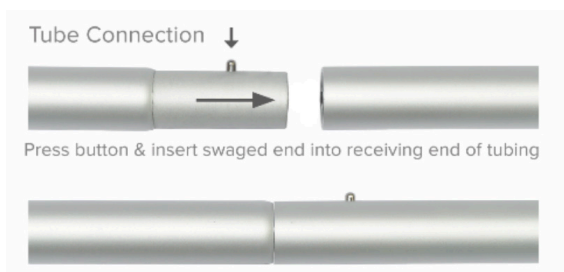
PRODUCT CATEGORY: WALLBOX DISPLAYS

PRODUCT CODE: WB-TOWER-2x10



On Frame

OnGraphic



PRODUCT DESCRIPTION

Introducing the Wallbox Tower Tube Frame Fabric Display: Elevate Your Visual Presentation with Unmatched Elegance

Unleash the power of impeccable design and seamless functionality with our Wallbox Tower Tube Frame Fabric Display, the quintessential choice for captivating your audience. Available in both 2ft and 3ft widths and standing tall at 8ft and 10ft heights, this display effortlessly combines form and function, making it an essential tool for your branding endeavors.

Crafted with Precision:

The frame of the Wallbox Tower is meticulously engineered, boasting a robust construction of 30mm silver anodized tubing. Its structural integrity is reinforced by plastic connectors, ensuring that your display stands firm and proud, making a lasting impression on your audience.

Effortless Assembly:

Say goodbye to cumbersome setups! Our tool-free spring button frame assembly enables you to effortlessly put together your display, saving you valuable time and energy. With just a few simple clicks, your tower will rise, ready to take center stage.

Graphic Excellence:

Your brand's story deserves to be told with brilliance and vibrancy. The custom graphics for the Wallbox Tower display are a testament to this commitment. Each panel features a pillowcase-style finishing with a secure white #10 zipper closure on the bottom panel. This not only guarantees a snug fit but also maintains a polished and professional appearance.

Dye Sublimation Magic:

The four graphic panels of the Wallbox Tower are brought to life through cutting-edge dye-sublimation printing on stretch fabric. This advanced technique ensures that your visuals are vivid, sharp, and resistant to fading, promising a long-lasting impact on your audience.

Attention to Detail:

The top panel of the display is thoughtfully finished with blank white material, while the bottom panel features a sleek black material. This careful attention to detail contributes to an overall polished look, enhancing the elegance of your presentation.

Choose the Wallbox Tower Tube Frame Fabric Display for a truly immersive branding experience that leaves an indelible mark on your audience. With unmatched aesthetics, durability, and ease of assembly, it's the perfect solution for showcasing your brand in style.

Elevate your presentation and make an unforgettable impression with the Wallbox Tower – where design meets functionality, and excellence knows no bounds.

DISPLAY DIMENSIONS	3'W x 10'H x 3'D
GRAPHIC DIMENSIONS	87"W x 120.5"H (All 4 Panels)

GRAPHIC MATERIAL

Dye Sublimated Stretch Fabric

GRAPHIC FINISHING

Pillowcase graphic finishing with a white #10 zipper closure around the bottom panel. All 4 graphic panels are dye sub printed on stretch fabric. Top panel is finished with blank white material with a blank black material on the bottom.

DISPLAY CONSTRUCTION

30mm aluminum tubing with plastic connectors

SHIPPING WEIGHTS & DIMENSIONS

Shipping Weight	13 lbs (Graphic Package) 7 lbs (Hardware Only) 6 lbs (Graphic Only)
Shipping Dimensions	40" L x 14" W x 4" H (Graphic Package) 40" L x 14" W x 4" H (Hardware Only) Poly Bag (Graphic Only)

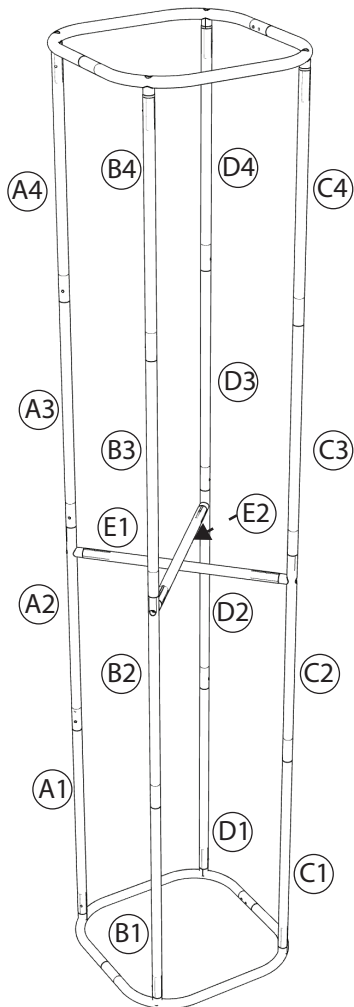
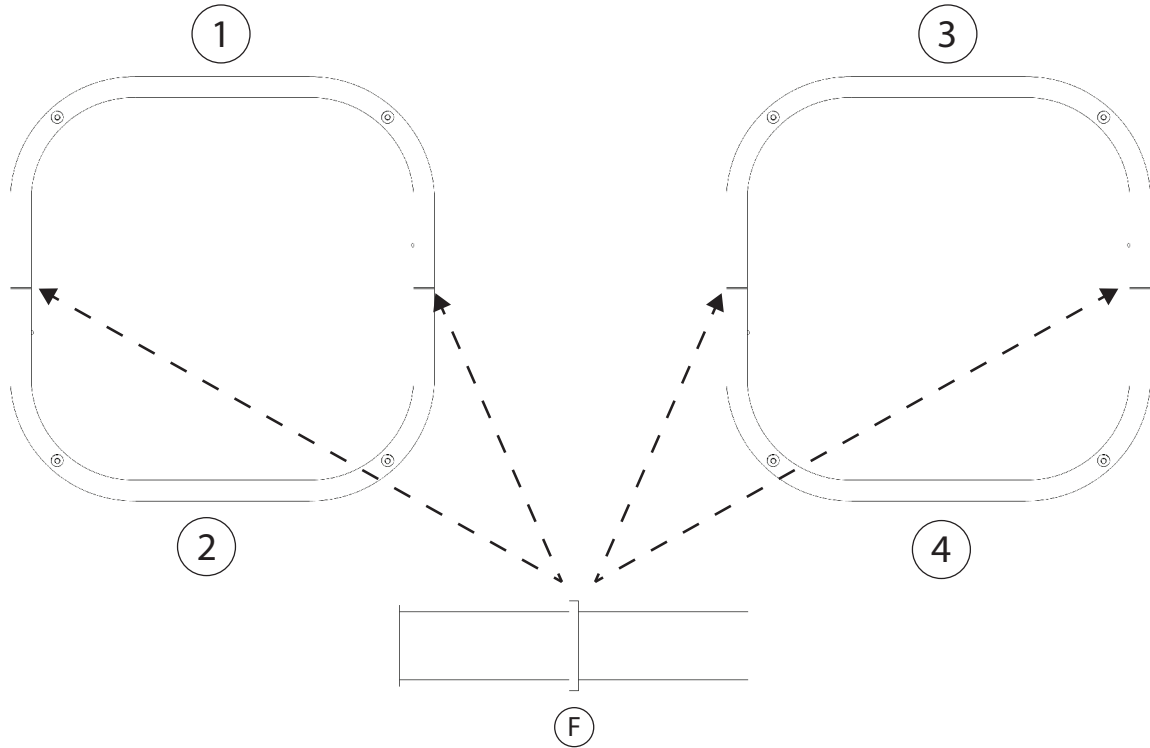
WALLBOX TOWER 2FT X 10FT X 2FT

PRODUCT CATEGORY: WALLBOX DISPLAYS
 PRODUCT CODE: WB-TOWER-2x10

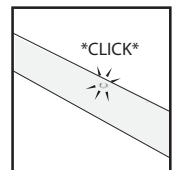
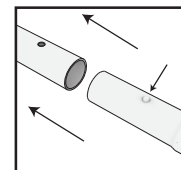


On Frame OnGraphic

SET UP INSTRUCTIONS/ PARTS LIST



Press button & insert swaged end into receiving end of tubing



Part #	Length	Tube
A1,B1,C1,D1,A3,B3,C3,D3	32.25"	M/F
A2,B2,C2,D2	32.25"	M/F
A4,B4,C4,D4	29"	F/F
1,2,3,4	40.875"	F/F
F	N/A	N/A