

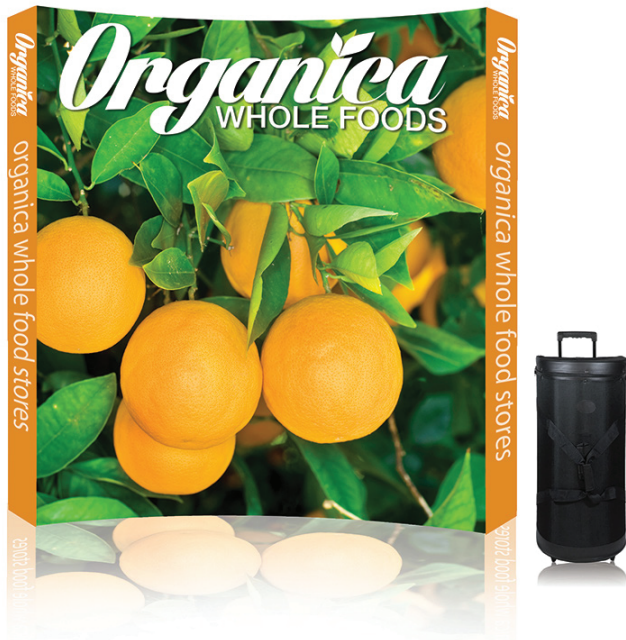
READY POP MEDIUM CURVE

READY POP FABRIC POP UP DISPLAY

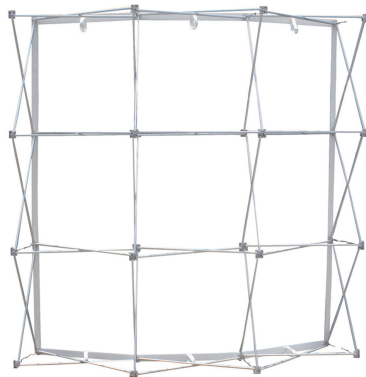
PRODUCT CODE: RP3X3CRV



On frame On graphic



150w Halogen lights
UL Listed
(Optional)



Half Hard Case is optional.



*Package includes padded
nylon travel bag

PRODUCT DESCRIPTION

Our ultra lightweight aluminum alloy fabric pop-up display in a matte satin anodized finish is an ideal eye-catcher for your trade show, exhibition, or conference. It's versatility and simple 2-minute setup, as well as its Velcro attachment, makes it functional for special events as well as an in-office promotional tool for walk-in customers. Another convenient feature is that your graphic stays attached in your free travel/carry bag that comes with each frame you purchase.

DISPLAY DIMENSIONS	90"W x 89"H x 24"D
GRAPHIC SIZE	106.25"W x 89"H

GRAPHIC MATERIAL

Stretch Fabric

GRAPHIC FINISHING

2" Loop Velcro on back perimeter

DISPLAY CONSTRUCTION

Aluminum frame, 2" Velcro (hook) strips, and plastic hooks.

SHIPPING WEIGHTS & DIMENSIONS

Shipping Weight	28 lbs (stand only) 30 lbs (frame and graphic)
Shipping Dimensions	41"L x 18"W x 17"H

LARGE QUANTITY FREIGHT

Freight Shipping	12 boxes per 48"L x 40"W x 73"H skid
Freight Weight	381 lbs (frame only) 405 lbs (frame & graphic)

GRAPHIC TURN AROUND TIME

2 business days after proof approval

AVAILABLE ACCESSORIES

150w Halogen lights - UL Listed

Half Hard Case

AVAILABILITY	CA and PA
--------------	-----------

READY POP MEDIUM CURVE

READY POP FABRIC POP UP DISPLAY
PRODUCT CODE: RP3x3CRV

PARTS LIST



(Qty 1) Frame
(with pre-installed graphic)



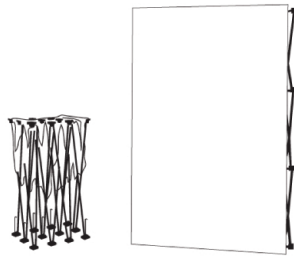
(Qty 1) Padded nylon travel bag

READY POP MEDIUM CURVE

READY POP FABRIC POP UP DISPLAY

PRODUCT CODE: RP3X3CRV

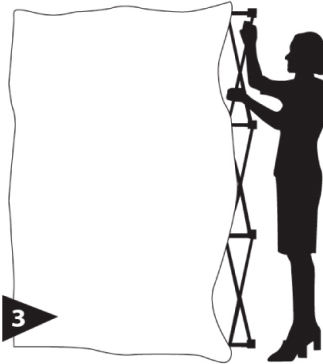
SET UP INSTRUCTIONS



1 Remove frame and graphic from nylon bag.



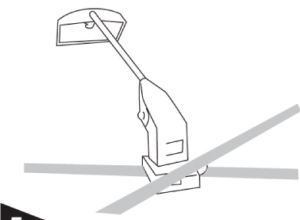
2 Ensure "adjustable feet" of frame are on the floor. Pull up display into upright position.



3 Lock all hooks between front and back hubs.



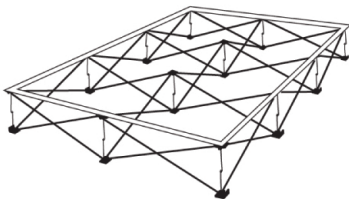
4 Adjust leveling feet for desired angle. Ready pop display can now easily be moved into position.



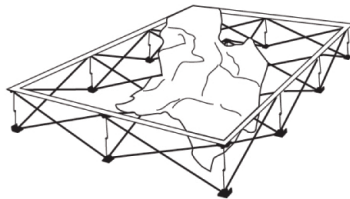
5 **OPTIONAL**
Attach lights to top of frame by sliding the plastic "x blocks" under the frames cross sections.

Warning: To avoid damage, separate end caps & disconnect ALL hooks before collapsing the frame.

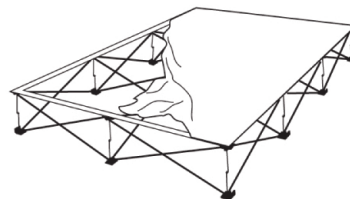
How to install or replace graphics on your OneFabric:



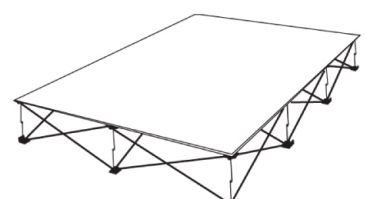
1 Assemble frame and lay flat on its back. Remove existing graphic.



2 Starting at one corner, attach velcro on the graphic to velcro on the frame. **NOTE:** Velcro on the graphic should extend approx. 1/4" - 1/2" beyond velcro on the frame (it should not be flush).



3 Working in a continuous direction around the frame, attach the rest of the graphic. Make sure the graphic is pulled taut while attaching the velcro.



4 If needed, adjust velcro for taut fit.