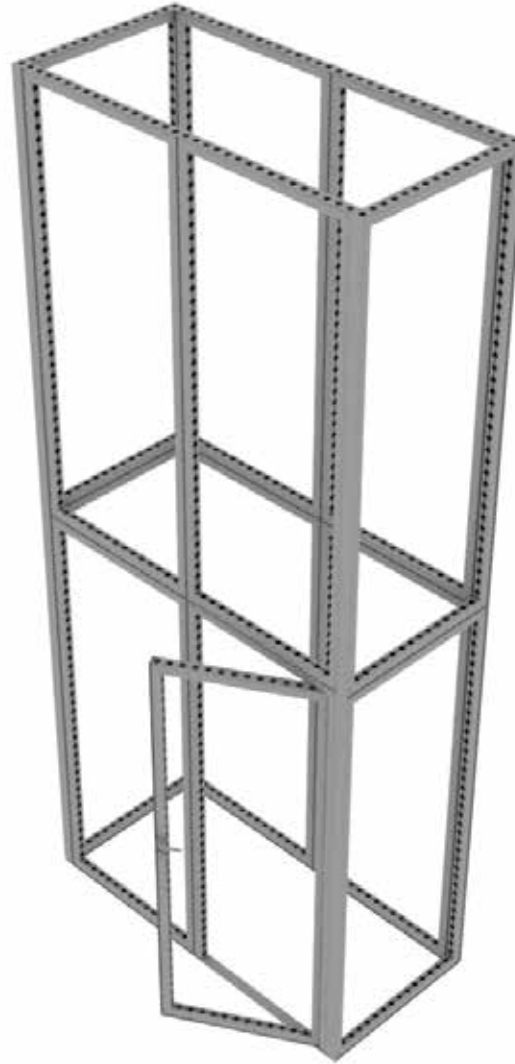


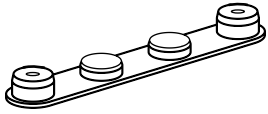
MODCO 7A TOWER



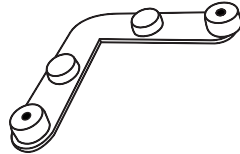
PARTS LIST (TOWER)			
REF	QTY	PART NO.	DESCRIPTION
11	11	MOD-FRM-992x2418	Straight Frame, Corner Screw Connect 992mm x 2418mm
16	1	MOD-DSWL-992x2418	Door Set w/ Lock 992mm x 2418mm
E	16	MOD-CLA-CON	Clamp Connector
D	7	MOD-SM90D-CON	Small 90° Connector
C	16	MOD-90D-CON	90° Connector
B	58	MOD-PC	Pin Connector
A	2	MOD-PCWP-A	Pin Connector for Door Jamb
AA	4	MOD-DCC-180D	Door Clamp Connector, 180° Degrees (Connect to Wall Frame)
F	7	MOD-180D-CON	180° Connector

INSTRUCTIONS

PARTS LIST



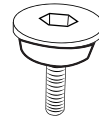
180° Connector
MOD-180D-CON
Qty.7



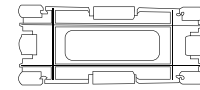
Small 90° Connector
MOD-SM90D-CON
Qty.7



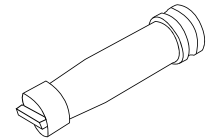
Pin Connector
MOD-PC
Qty.56



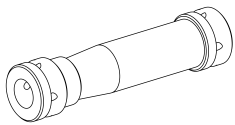
Door Pin Connector
MOD-PCWP-A
Qty.2



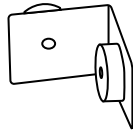
Clip Connector
MOD-CC
Qty.24



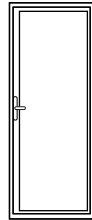
Door Clamp Connector
MOD-DCC-180D
Qty.4



Clamp Connector
MOD-CLA-CON
Qty.16



90° Connector
MOD-90D-CON
Qty.16



95" Door
MOD-DSWL-992x2418
Qty.1

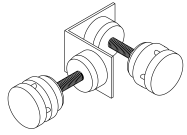


992 x 2418
MOD-FRM-992x2418
Qty.11

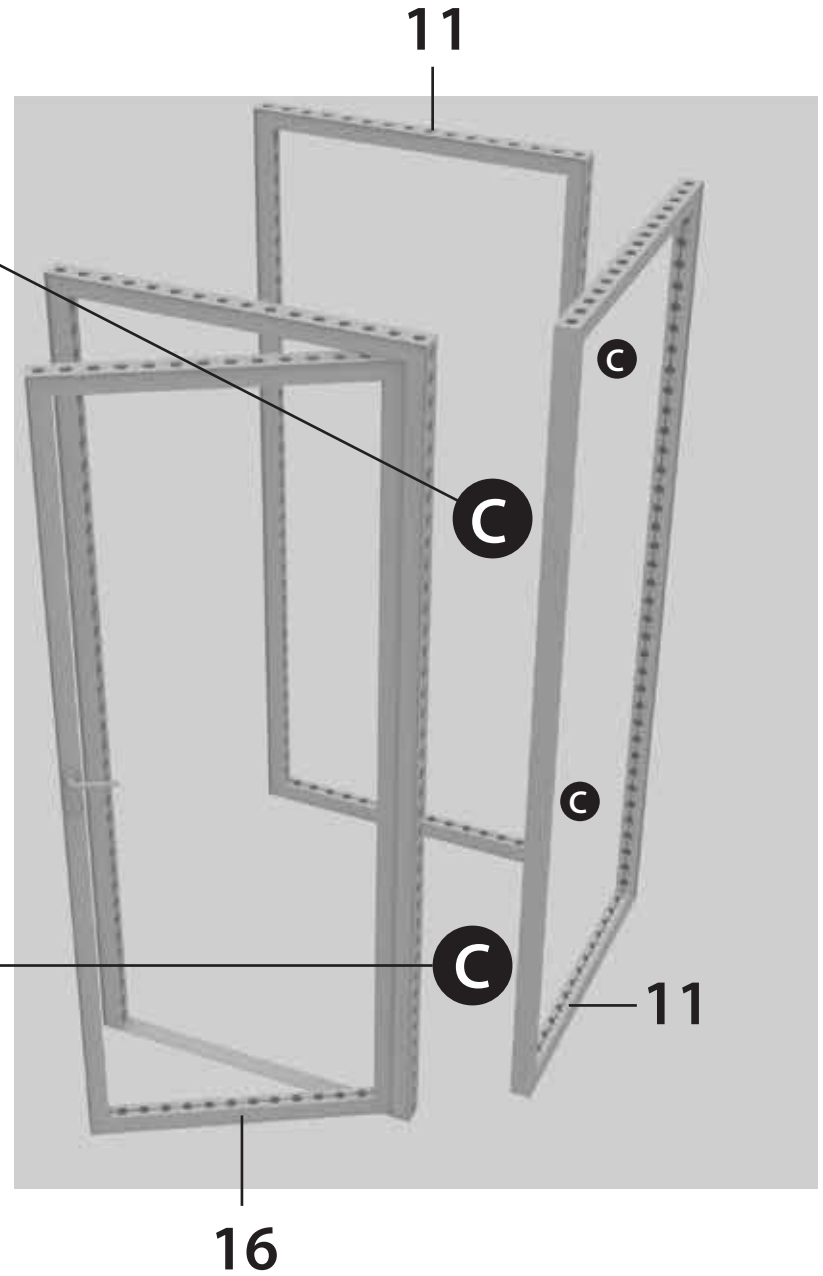
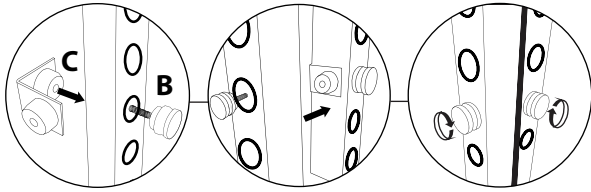


95" Cover Profile
MOD-CP-3100
Qty.8

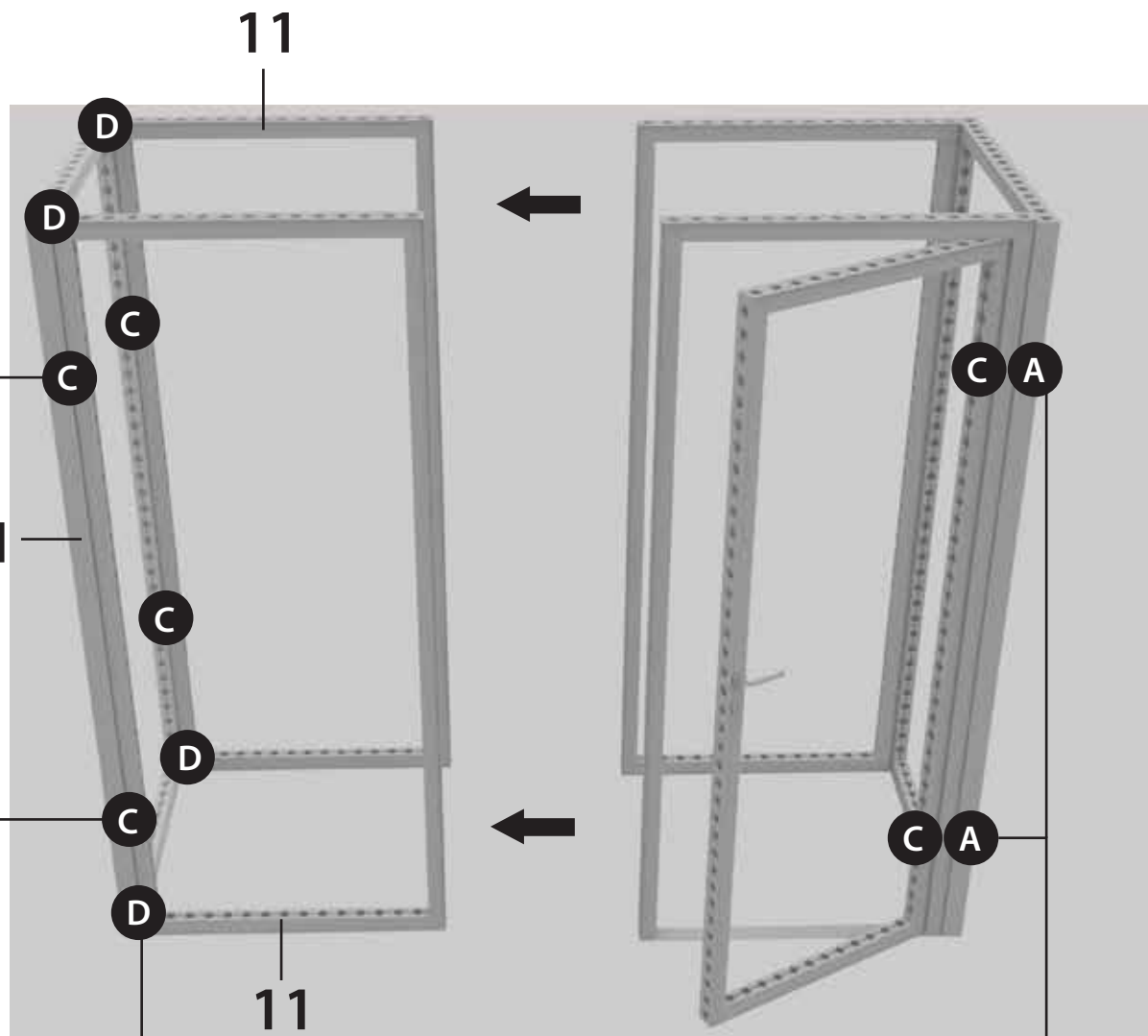
STEP 1



REF (C) + (B)
MOD-90D-CON + MOD-PC



STEP 2



REF (C) + (B)
MOD-90D-CON + MOD-PC

This inset diagram shows a connector component and three circular views illustrating its installation into the window frame. The first view shows the connector being inserted into a hole. The second and third views show the connector fully seated and secured with a screw.

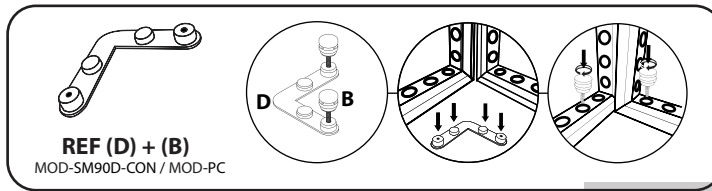
REF (D) + (B)
MOD-SM90D-CON / MOD-PC

This inset diagram shows an L-shaped bracket component and three circular views illustrating its installation into the window frame. The first view shows the bracket being inserted into a hole. The second and third views show the bracket fully seated and secured with a screw.

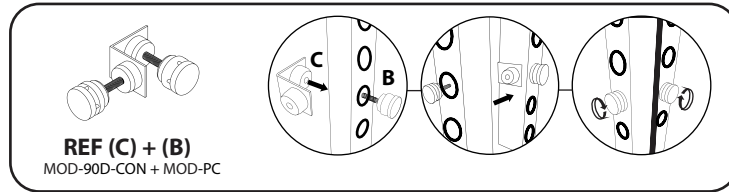
REF (C) + (B) + (A)
*MOD-PCWP-A will be inside of door hinge

This inset diagram shows a hinge assembly consisting of a hinge plate, a screw, and a washer. Two circular views illustrate the installation: the first shows the hinge plate being inserted into a hole in the door frame, and the second shows the screw and washer being used to secure it.

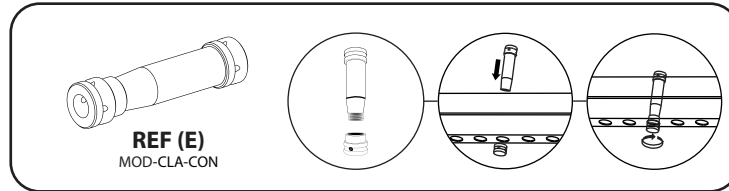
STEP 3



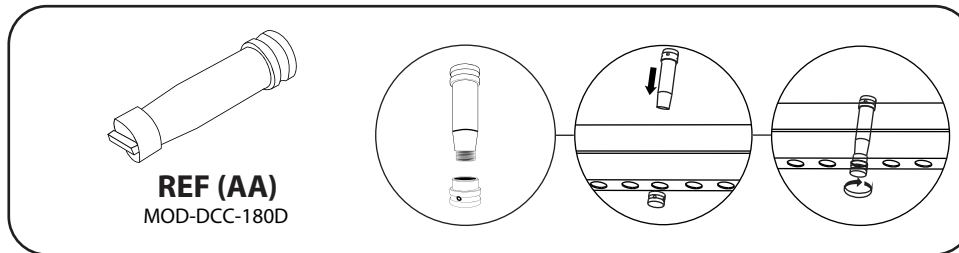
REF (D) + (B)
MOD-SM90D-CON / MOD-PC



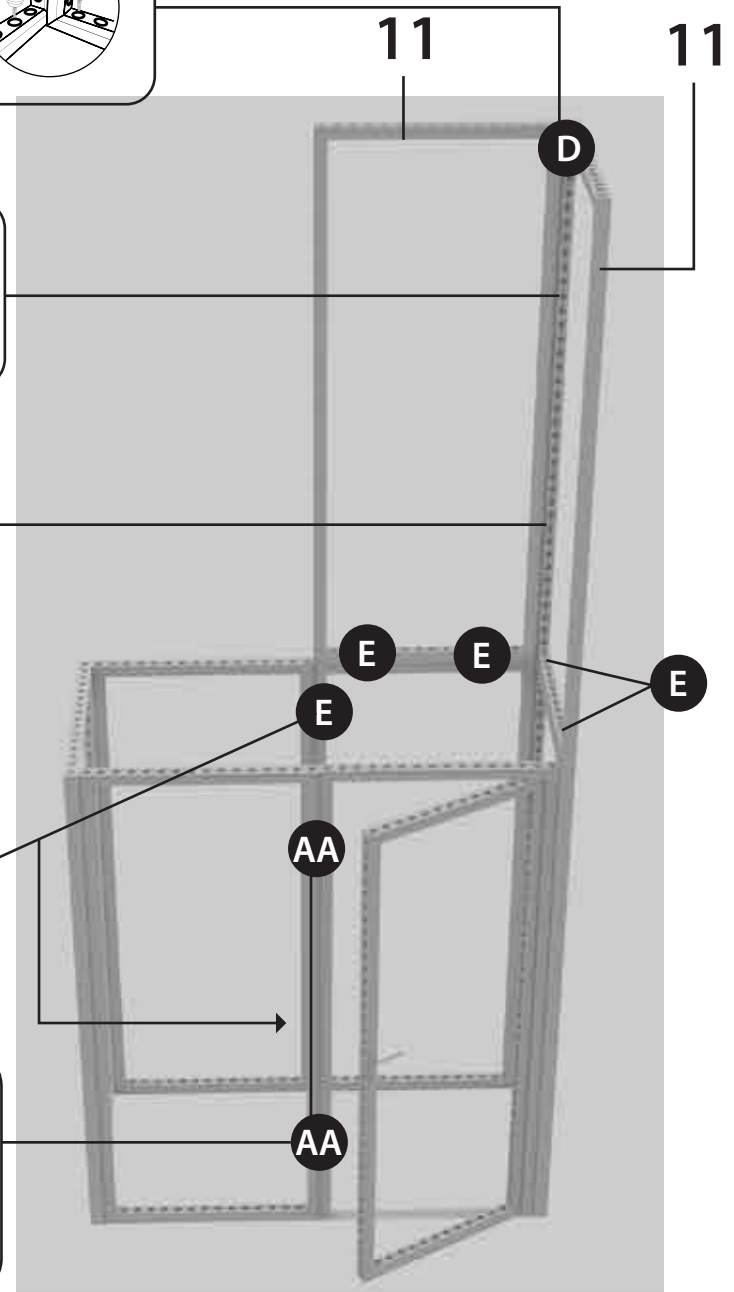
REF (C) + (B)
MOD-90D-CON + MOD-PC



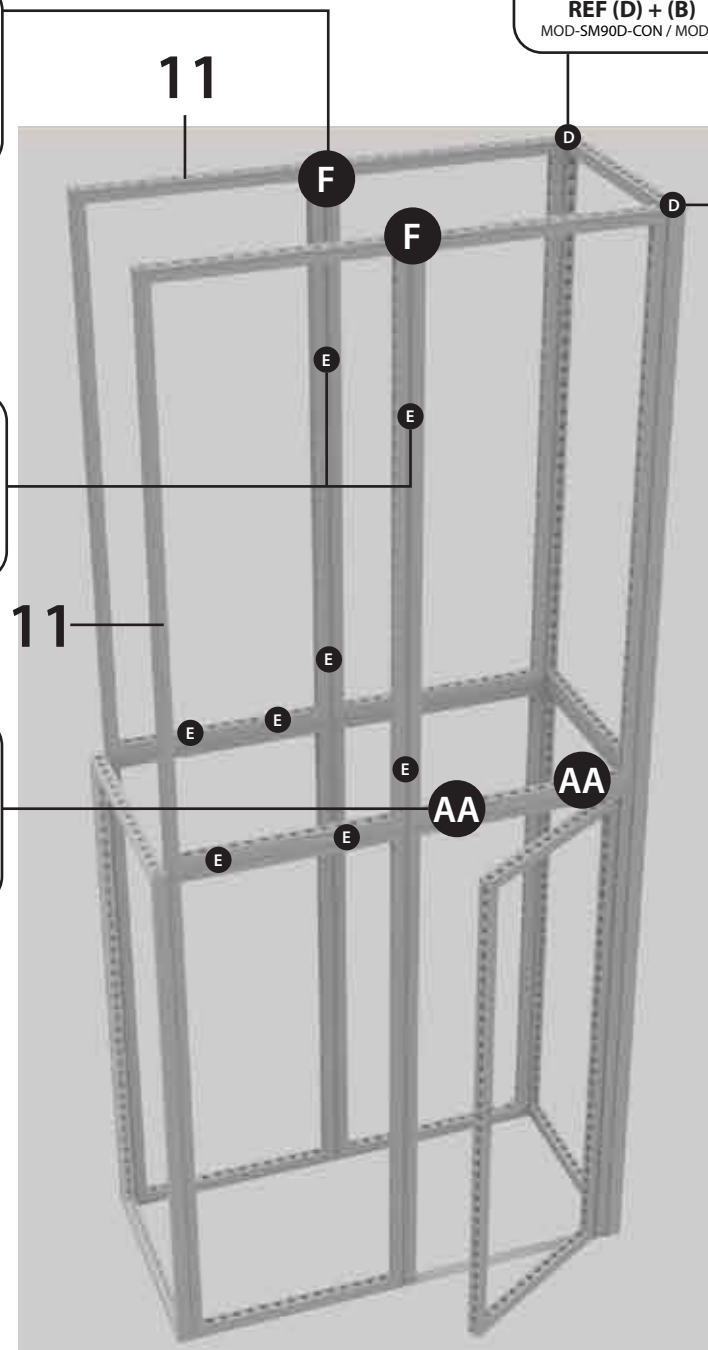
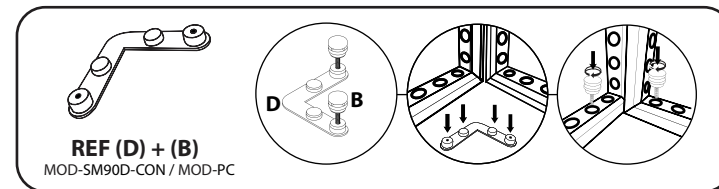
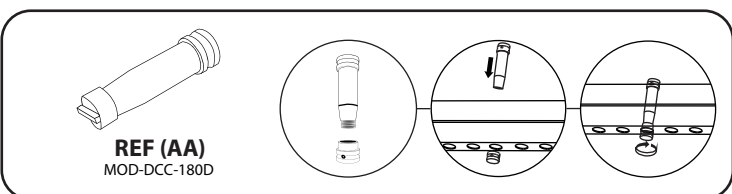
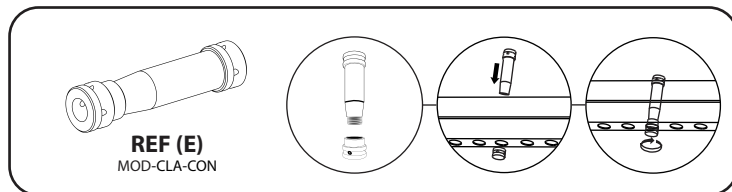
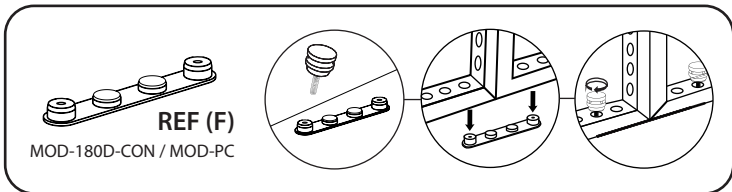
REF (E)
MOD-CLA-CON



REF (AA)
MOD-DCC-180D

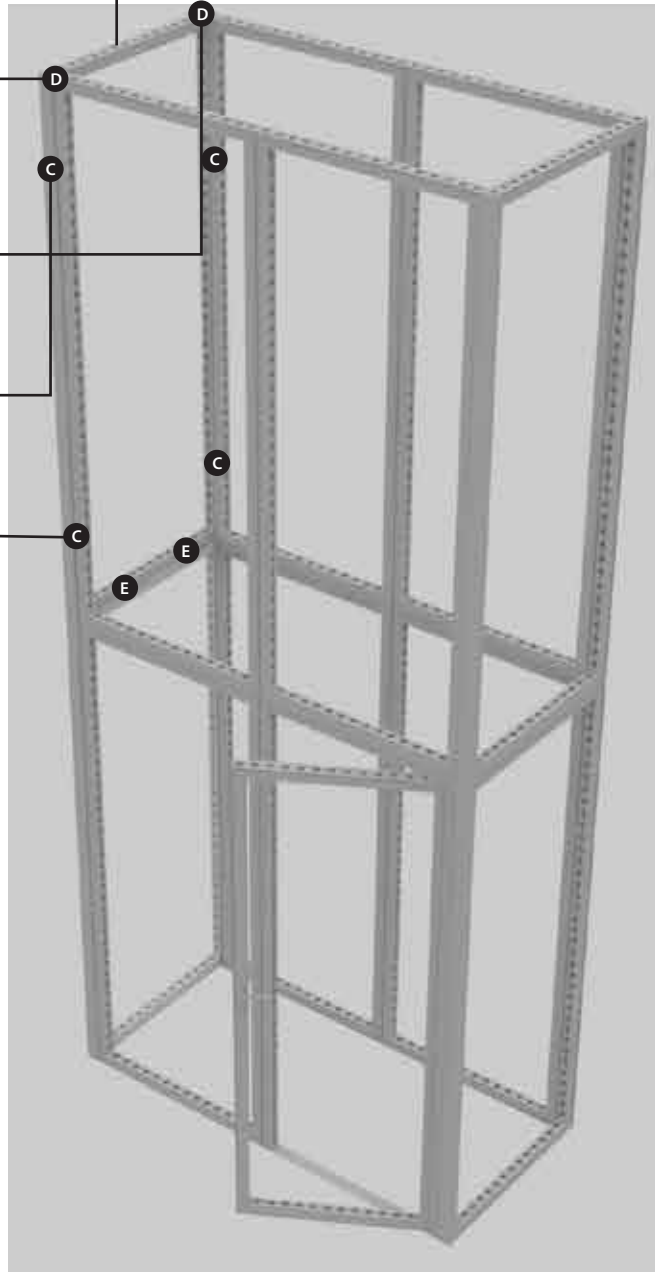
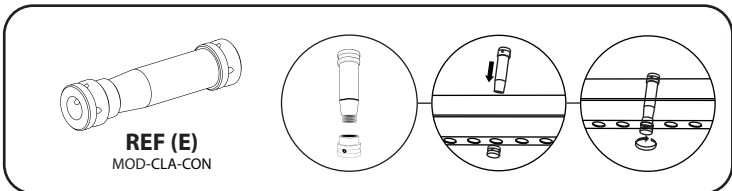
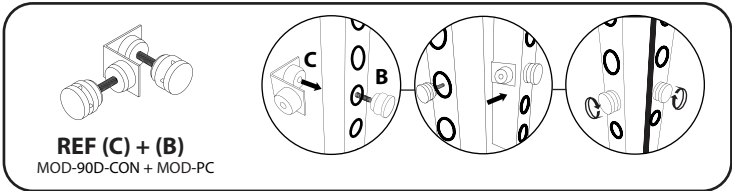
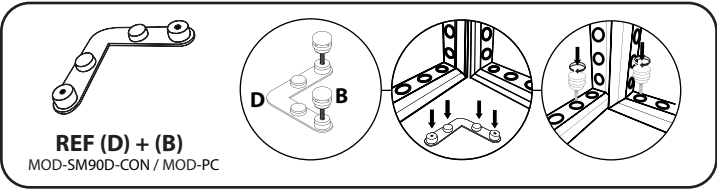


STEP 4

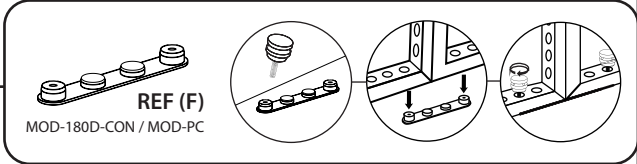
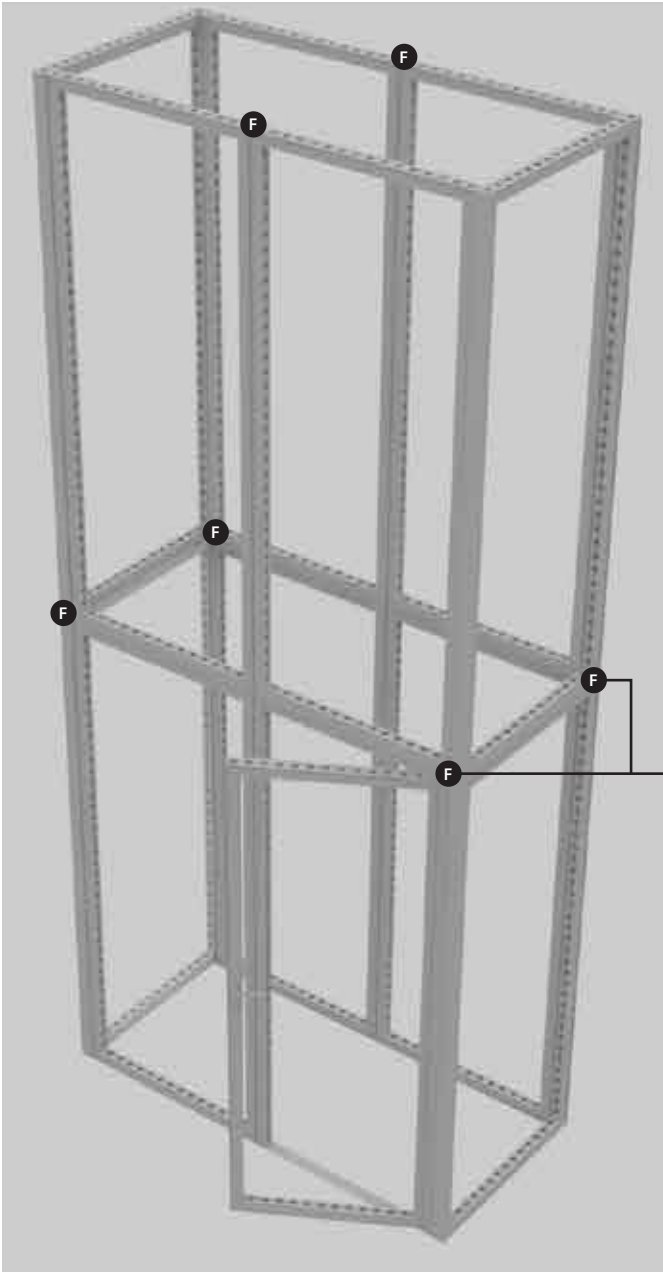


STEP 5

11

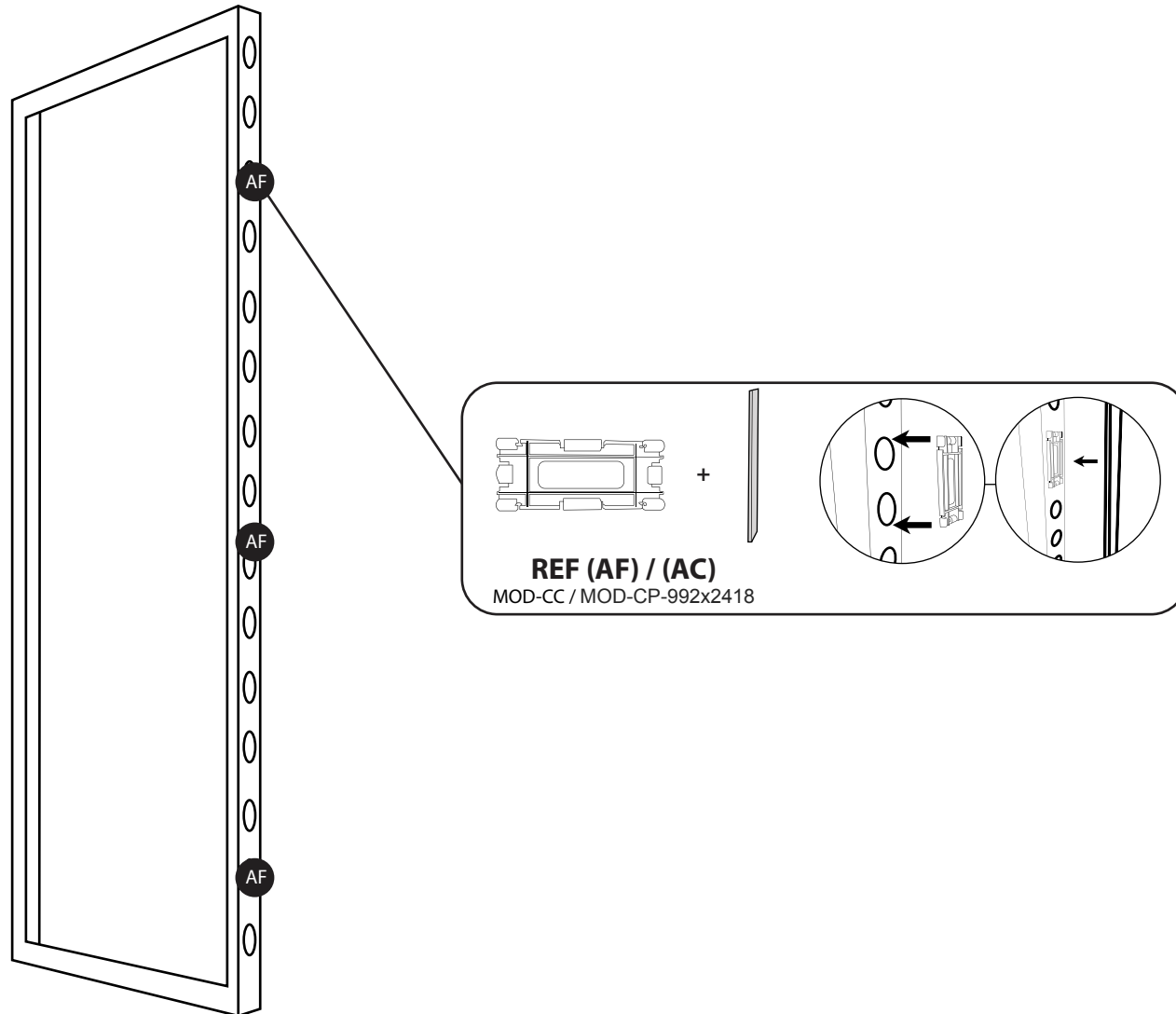


STEP 6



COVER PROFILES

- Use REF column to reference parts. Attach cover profile to each exposed side (8 sides total).



COVER PROFILES & ACCESSORIES

REF	QTY	PART NO.	DESCRIPTION
AD	8	MOD-CP-992x2418	Cover Profile for Frame 992x2480. Flat Model. Anodized
AF	24	MOD-CC	Clip Connector Cover Connects Cover Profile

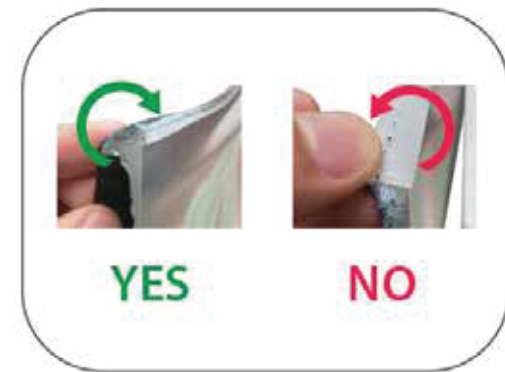
GRAPHIC INSTALL



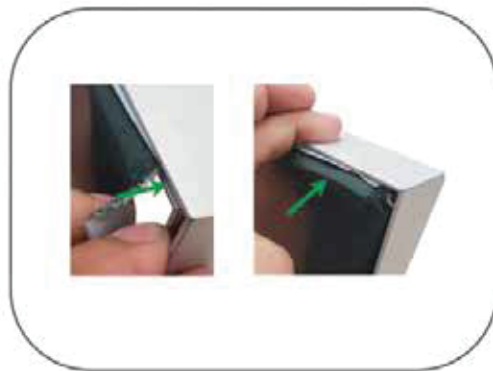
Place graphic over the front of the frame.



Begin inserting SEG beading at each corner.



Insert the silicone beading with the fabric folded over. The silicone beading should not be exposed.



Using your fingers, push both fabric and silicone beading completely into the extrusions channel.

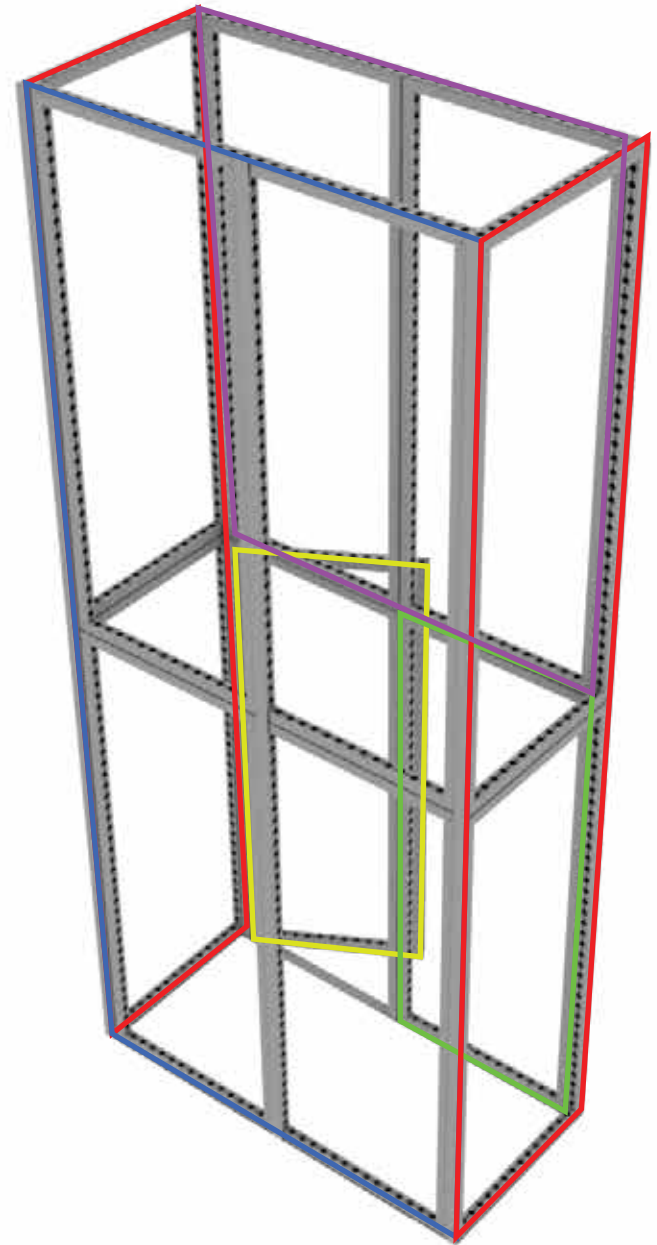
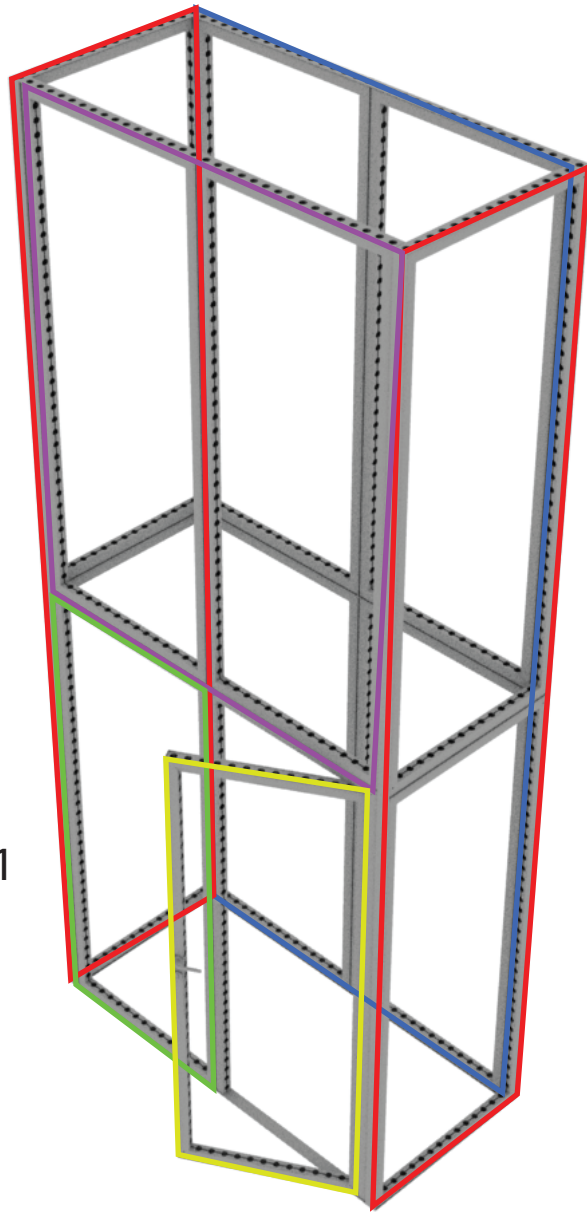


Continue to push in the remaining silicone beading on each side.



Check the perimeter of the frame for any excess beading that hasn't been pushed in. Graphic should be taut.

GRAPHIC REFERENCE



- 992 x 2418 Qty.1
- 992 x 2418 Door Qty.1
- 992 x 4836 Qty.2
- 1984 x 2418 Qty.1
- 1984 x 4836 Qty.1