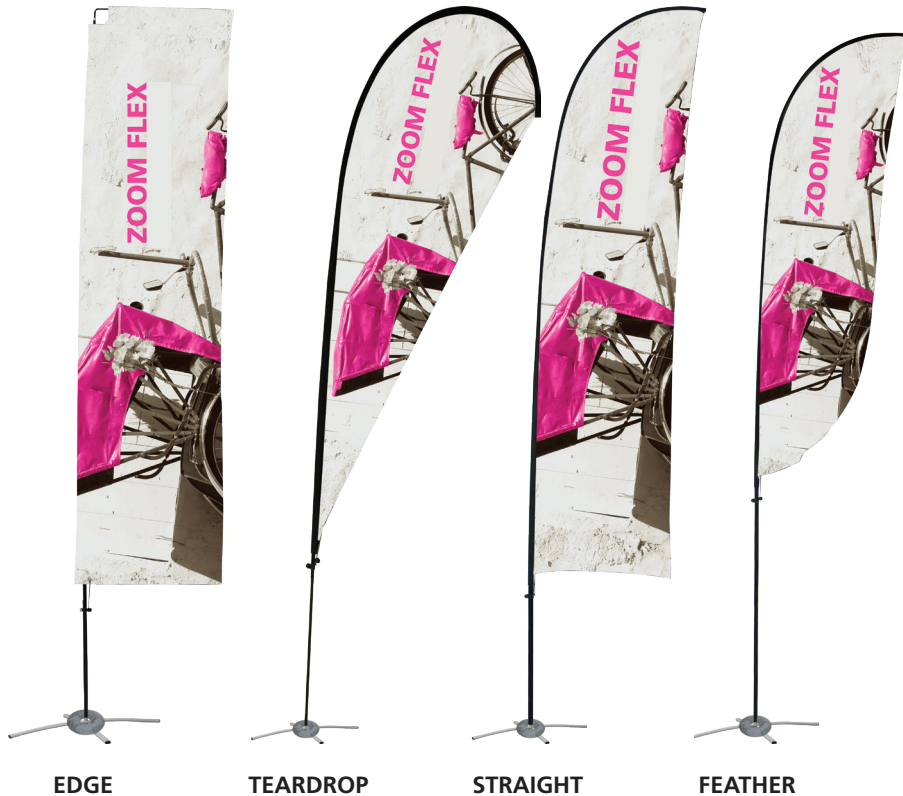


Zoom Flex Large Fiber Flag

ZOOM-FLX-LG ZOOM-FLX-LG-E

The Zoom Flex Flag features a full fiber pole and wind-resistant flag. For indoor or outdoor use, the flexible, design allows the graphic to rotate in the wind. The Zoom Flex Flag comes in your choice of single or double-sided and is offered in four shapes - Feather, Straight, Teardrop and Edge. Heights vary based on flag shape. Ground stake and storage bag included.



This product may include the following materials for recycle:
aluminum, select wood, fabric, cardboard, paper, steel, and plastics.

We are continually improving and modifying our product range and reserve the right to vary the specifications without prior notice. All dimensions and weights quoted are approximate and we accept no responsibility for variance. E&OE. See Graphic Templates for graphic bleed specifications.

features and benefits:

- Can be used indoors or out
- Graphic rotates in wind
- Ground stake and storage bag included
- Water fillable donut adds stability to the floor base (recommended)
- Four graphic shape options: Flex- Feather, Straight, Teardrop, and Edge- rectangle.
- Additional sizes available
- Includes carry bag or case
- Double-sided graphic available
- One year hardware warranty against manufacturer defects

dimensions:

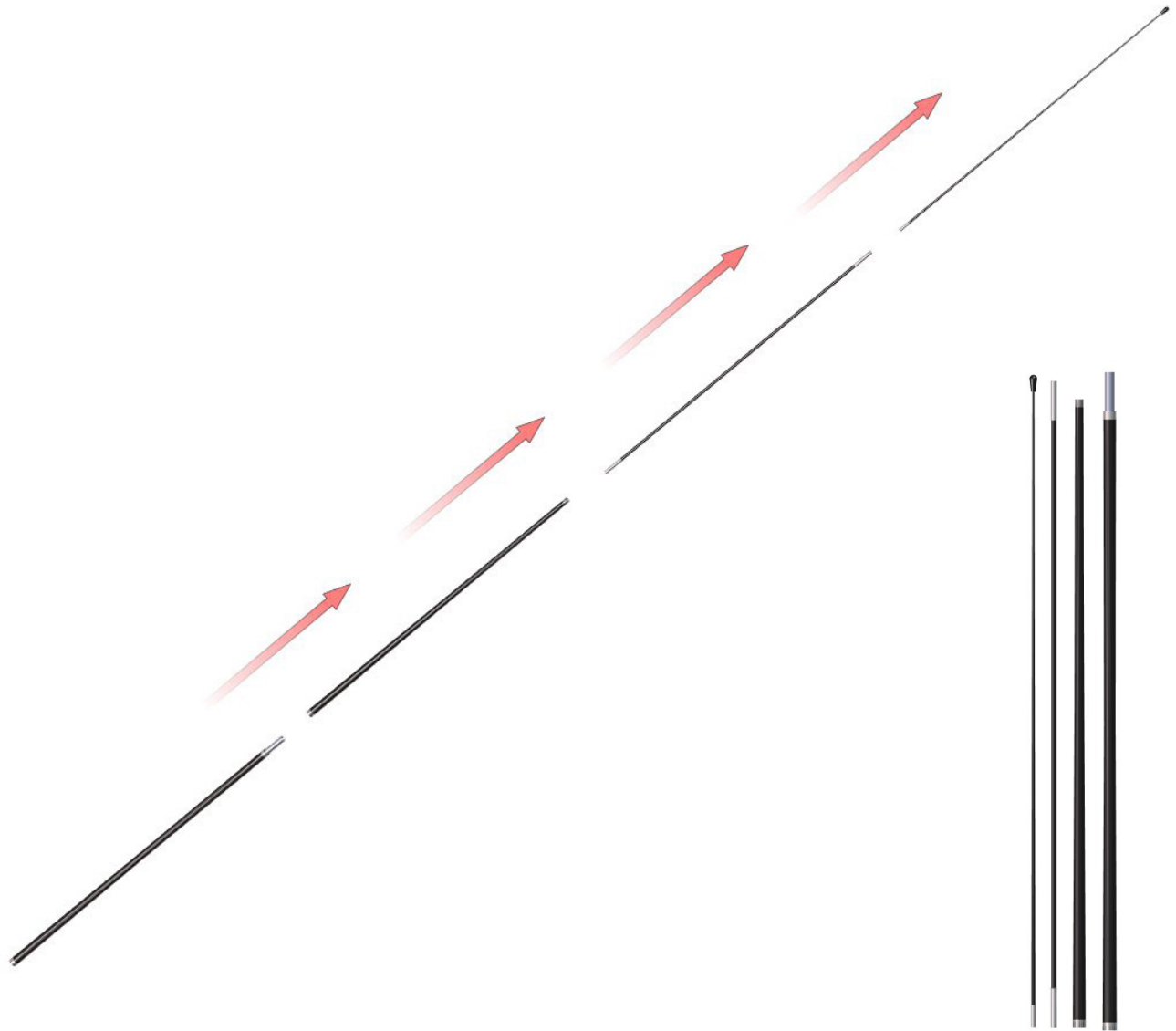
Hardware	Graphic
<p>Assembled unit: Maximum (dimensions may vary based on shape)</p> <p>FLEX: 64" w x 178.38" h x 1.75" d 1626mm(w) x 4531mm(h) x 45mm(d)</p> <p>FLEX-EDGE: 46" w x 160.13" h x 1.75" d 1168mm(w) x 4067mm(h) x 45mm(d)</p>	<p>Six month warranty.</p> <p>Visit: https://www.theexhibitorshandbook.com/download-graphic-templates</p>
Shipping	additional base options:
<p>Shipping dimensions (hardware only):</p> <p>FLEX: 48" l x 4" h x 4" d 1219mm(l) x 102mm(h) x 102mm(d)</p> <p>FLEX-EDGE: 56" (l) x 6" (w) x 4" (d) 1422mm(l) x 152mm(w) x 102mm(d)</p> <p>Approximate total shipping weight:</p> <p>FLEX: 7lbs / 4kg FLEX-EDGE: 8lbs / 4kg</p>	<p>*For best performance drive the flag holder in flush to the ground</p>

additional information:

- Double-sided graphic includes opaque liner.
- Graphics will pack in a separate box.
- For applications below 40 degrees fahrenheit, use sand in place of water.
- Wind rating: 37mph / 60kph max
- Use in adverse weather voids all warranties.

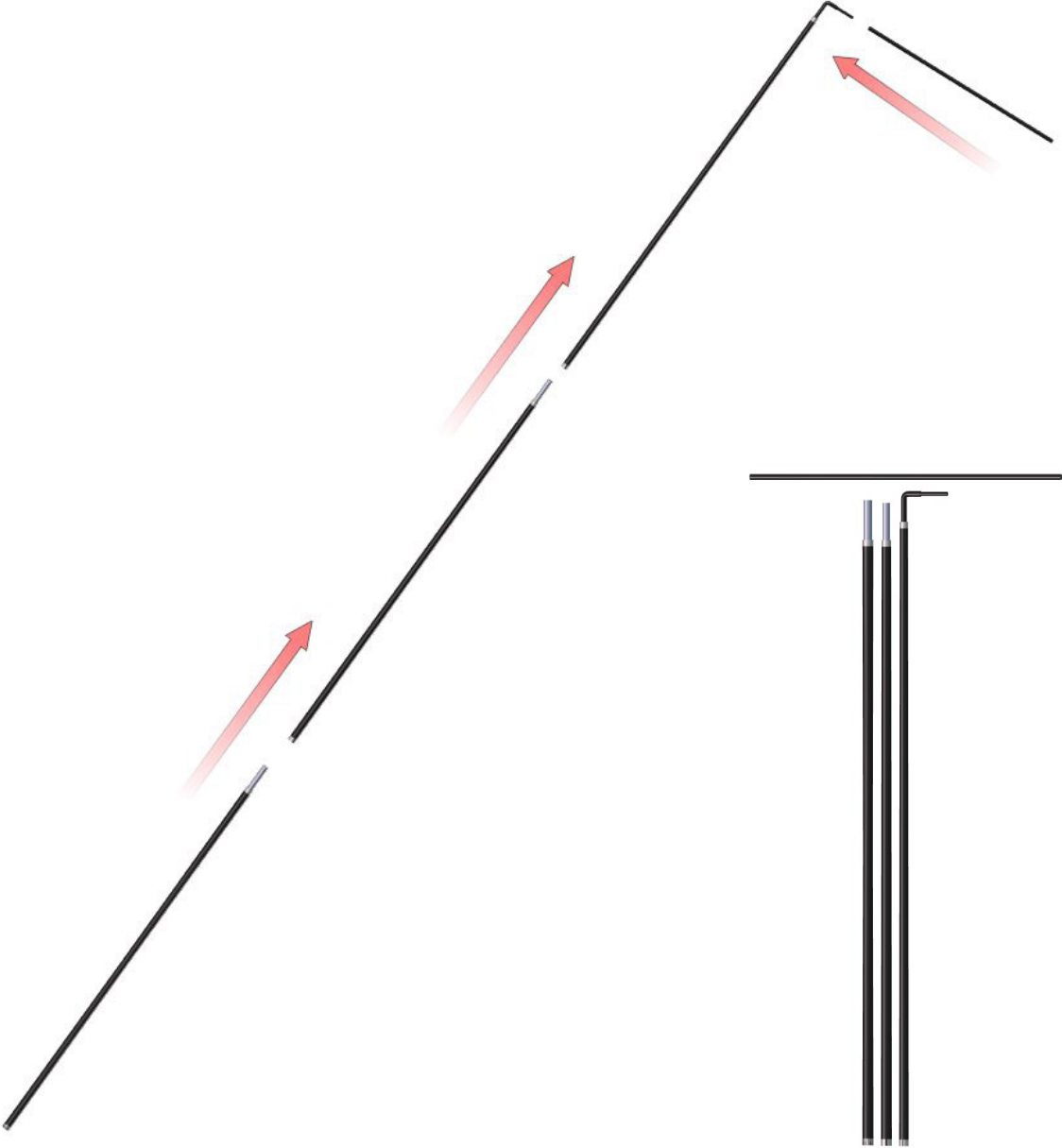
SET-UP ZOOM-FLEX

Flag Size:	Number of Poles
Small	3
Medium	4
Large	4
Extra Large	5

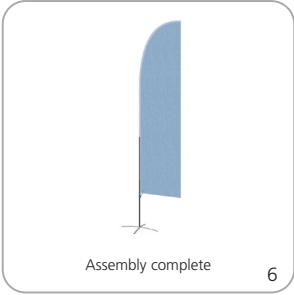
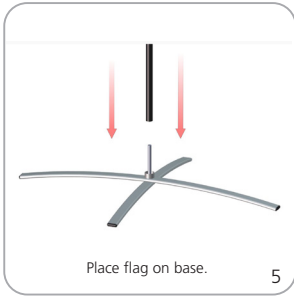
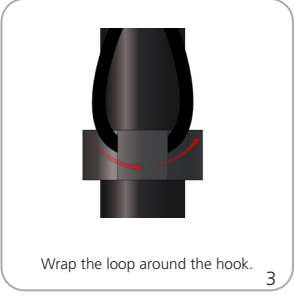
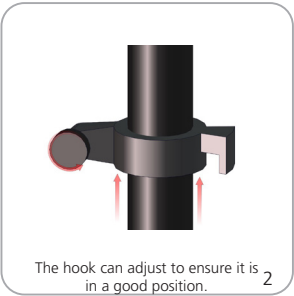
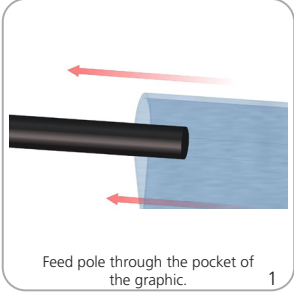


SET-UP ZOOM-FLEX-EDGE

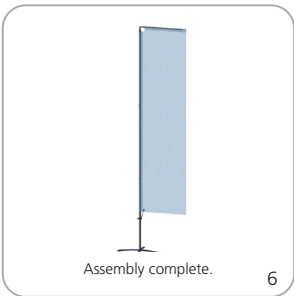
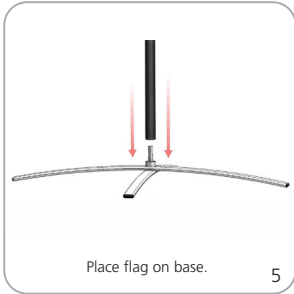
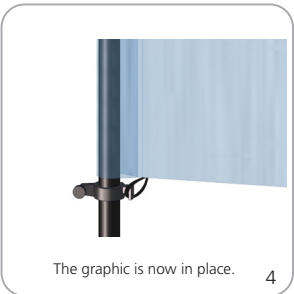
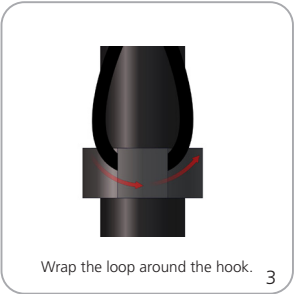
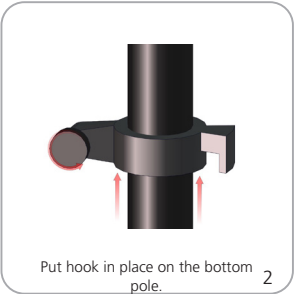
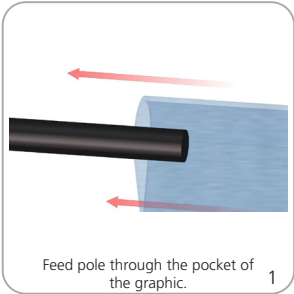
Flag Size:	Number of Poles
Small	3
Medium	4
Large	4
Extra Large	5



Attaching Graphic for ZOOM-FLEX

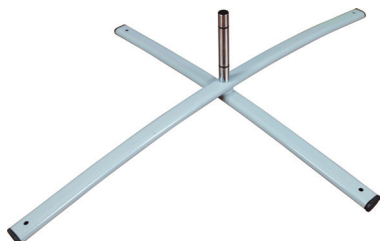


Attaching Graphic for ZOOM-FLEX-EDGE



Zoom Flag Bases

Zoom Cross Base

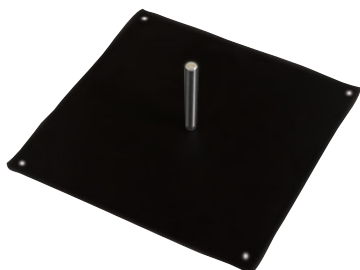


ZOOM-FLX-CB

*Water ring recommended

Assembled dimensions and weight:
31" W x 6.75" H x 24" D 4lbs
Shipping dimensions and weight:
32" L x 4" H x 2" D 5lbs

Zoom Square Steel Base



ZOOM-FLX-SQ

*Water ring recommended

Assembled dimensions and weight:
17.5" W x 5" H x 17.5" D 28lbs
Shipping dimensions and weight:
19" L x 18.5" H x 3.5" D 30lbs

Zoom Water Ring Base Support



ZOOM-FLX-WR

*Holds up to one gallon of liquid

Assembled dimensions and weight:
20.28" W x 5" H x 20.28" D 1lbs
Shipping dimensions and weight:
8" L x 4" H x 4" D 2lbs

Zoom Fillable Base



ZOOM-FLX-FB

*Holds up to 7 gallons of liquid

Assembled dimensions and weight:
19.7" W x 10.25" H x 19.7" D 7lbs
Shipping dimensions and weight:
22" L x 21" H x 10" D 9lbs

Zoom Ground Stake Base



ZOOM-FLX-STK

Ground Stake

Assembled dimensions and weight:
1.75" W x 2.5" H x 1.25" D 3lbs
Shipping dimensions and weight:
25" L x 2" H x 2" D 4lbs

Zoom Auger Base

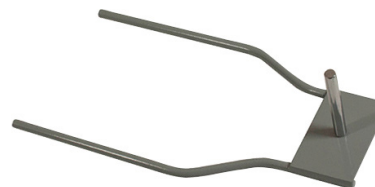


ZOOM-FLX-AGR

Screw in plastic base

Assembled dimensions and weight:
8.88" W x 21.75" H x 3.75" D 3lbs
Shipping dimensions and weight:
24" L x 6" H x 6" D 4lbs

Zoom Drive-Over Base



ZOOM-FLX-DO

Capable of being driven on or over

Assembled dimensions and weight:
23.62" W x 5.71" H x 7.87" D 14lbs
Shipping dimensions and weight:
24" L x 10" H x 3" D 16lbs

Zoom Stackable Base



ZOOM-FLX-STCK-BASE

*Holds up to 7 gallons of liquid

Assembled dimensions and weight:
25" W x 11" H x 25" D 8lbs
Shipping dimensions and weight:
27" L x 26" H x 8" D 10lbs