

BIG SKY COUNTER 2FT NON BACKLIT

RESORT EXTRUSIONS

PRODUCT CODE: BIGSKY-SLVC-NBL-2FT



On Frame

OnGraphic



PRODUCT DESCRIPTION

The Big Sky Counter is a part of our Resort Extrusion aluminum extrusion family. All Big Sky Counters frames and graphics are made to order on-site in our manufacturing department. Aluminum extrusion sticks with SEG channels are cut to size, with locks pre-installed on the horizontal profiles. The acrylic tops have been updated and are now 2 piece which allows the tops to ship in the same box as the frame + graphics and hardcase options as well. Frame assembly and graphic installation take minutes and include the star tool needed for frame assembly. The counters allow for graphics to be displayed on all 4 sides, making your message viewable from any angle.

*When reordering make sure you order the correct version. The current version has 23" x 23" 2 piece acrylic countertops. The classic version has 24" x 24" single piece acrylic countertops.

| | |
|--------------------|-----------------------------|
| DISPLAY DIMENSIONS | 23"W x 40"H x 23"D |
| GRAPHIC SIZE | 23"W x 40.25"H (each panel) |

GRAPHIC MATERIAL

Dye Sublimated Stretch Fabric

GRAPHIC FINISHING

12mm x 3mm silicone beading sewn to perimeter of graphic. A pull tab is added to bottom corner to help with graphic removal.

DISPLAY CONSTRUCTION

Anodized silver aluminum profile frame with plastic end caps with frosted clear acrylic countertop

SHIPPING WEIGHTS & DIMENSIONS

| | |
|---------------------|---|
| Shipping Weight | 23 lbs (Graphic Package) 21 lbs (Hardware Only) 2 lbs (Graphic Only - All 4 Panels) |
| Shipping Dimensions | 27.5"L x 12" W x 4" H (Graphic Package and Hardware Only) Polybag (Graphic Only) |

GRAPHIC TURN AROUND TIME

2 business days after proof approval for up to 2 sets

| | |
|-------------------------|--------|
| COUNTERTOP WEIGHT LIMIT | 20 lbs |
|-------------------------|--------|



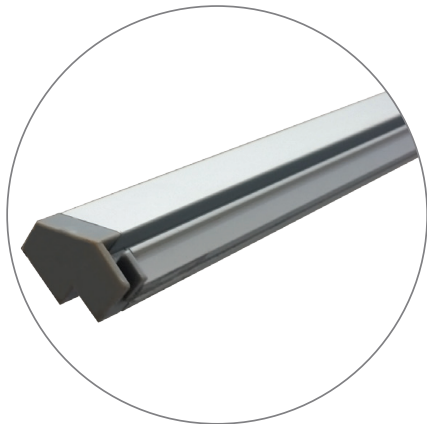
BIG SKY COUNTER 2FT NON BACKLIT

RESORT EXTRUSIONS

PRODUCT CODE: BIGSKY-SLVC-NBL-2FT



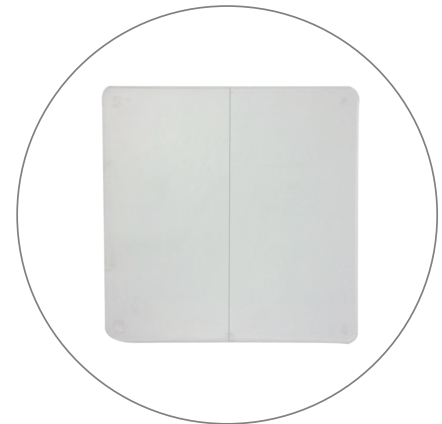
PARTS LIST



(qty 4)
40" BIGSKY-32D Profiles
w/End Caps



(qty 8)
22" BIGSKY-40CG Profiles
w/Locks



(qty 1)
2 Piece Acrylic Countertop



(qty 1)
STAR-TOOL



On Frame

OnGraphic

TEMPLATE

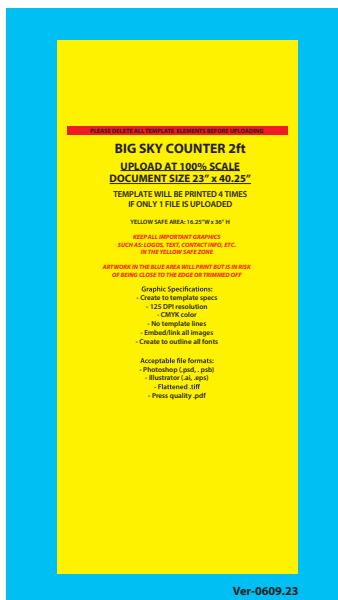


GRAPHIC ONLY TEMPLATE

(QTY 1) 2FT PANEL ONLY

THE FOLLOWING IS NEEDED TO RESKIN THE WHOLE COUNTER

(QTY 4) 2FT GRAPHIC ONLY



GRAPHIC PACKAGE TEMPLATE

(QTY 1) 2FT PANEL

WILL BE PRINTED 4 TIMES IF ONLY 1 FILE IS UPLOADED

BIG SKY COUNTER 2FT NON BACKLIT

RESORT EXTRUSIONS

PRODUCT CODE: BIGSKY-SLVC-NBL-2FT



On Frame

OnGraphic

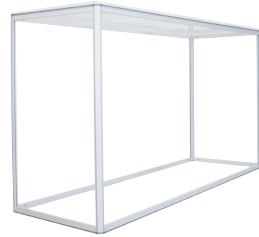
SET UP INSTRUCTIONS

Big Sky Counter - Build From Bottom Up

1. Lay Out Your Pieces:



a. We recommend to begin build on flat, soft surface.

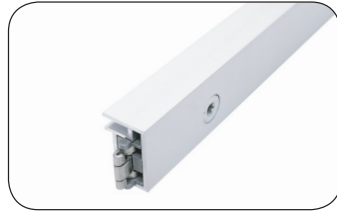


b. 1 person can assemble large frames.

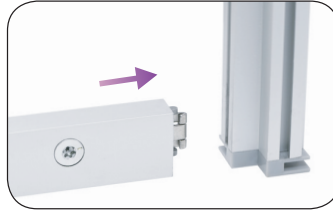
2. Locate the Bottom and Side Extrusions:



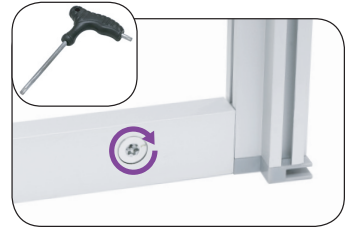
a. See colored numbers on each



c. End Lock is already attached to opposite ends of extrusion.

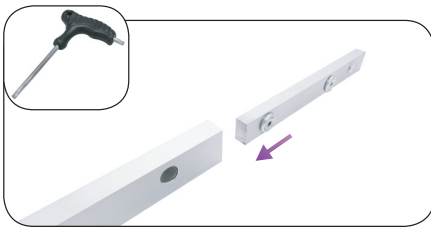


d. Connect horizontal extrusion to the bottom of a vertical extrusion, screw facing inward.

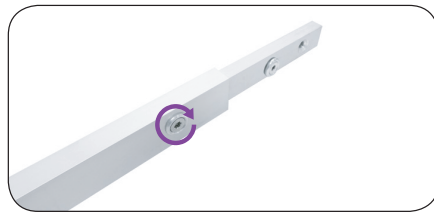


e. Use Torx Key to tighten and secure connection.

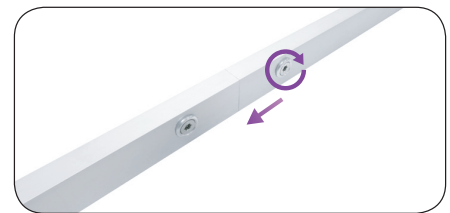
3. FOR FRAMES 8 FT or WIDER or for CUSTOM CUT. Attach Split Connectors to Bottom & Top Extrusions:



a. Split Connector: Remove the screw and insert split connector into one end of the extrusion.



b. Tighten screw to lock it into place. Remove the remaining screw from the connector.



c. Then slide the other extrusion onto split connector. Make sure extrusions are flush and tighten the screw to secure connection.

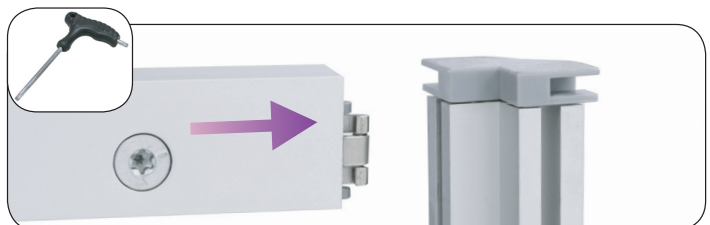
Next - Build the Top Half

1. Locate the Top and Side Extrusions:



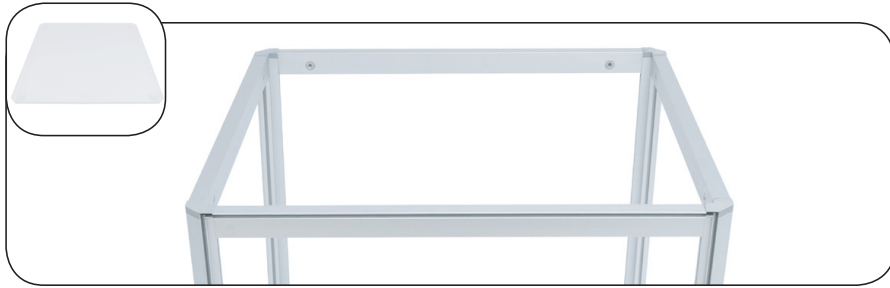
a. See colored numbers on each extrusion piece. Match like colored numbers together. (e.g. 3-3, 4-4).

2. Connect Top Extrusions:



b. Connect top extrusions together and use torx key to tighten.

Acrylic Countertop Insallation



- a.** Place acrylic countertop pieces onto top of frame.



- b.** Make sure the counter top is aligned with the edges of the frame