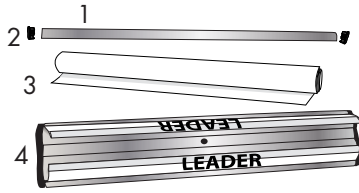


Four Season Trek Lite Retractor

Kit Item# 263040
 Hardware Only Item # 263041
 Graphic Only Item# 190254

Product Parts for Installing Banner (Steps 1 thru 7)

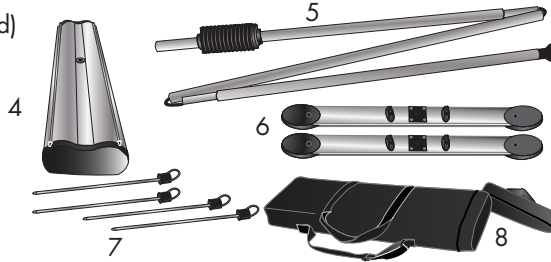
- 1 - Banner Snap Rail
- 2 - Snap Rail End Caps (x2)
- 3 - Graphic Banner *
- 4 - Base Unit (with 2 leaders)



*Base Unit can be installed with one or two Graphic Banners.

Product Parts for Display (skip to STEP 8)

- 4 - Base (with graphic installed)
- 5 - Vertical Pole
- 6 - Feet (x2)
- 7 - Stakes (x4)
- 8 - Soft Case

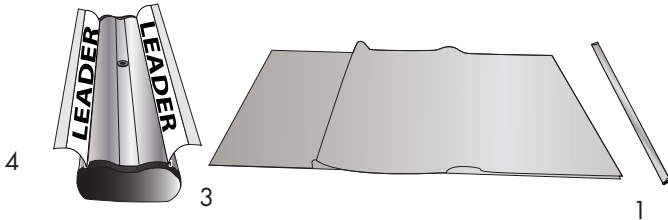


DO NOT REMOVE PIN UNTIL DIRECTED (STEP 6)

Banner Install

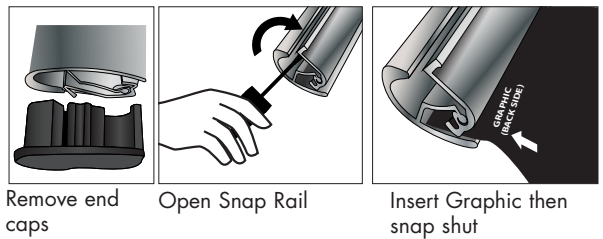
Step 1

Remove all parts from the Soft Case (8). Place the banner on a clean flat surface.



Step 2

Remove both end caps (2) from the Banner Snap Rail (1) and open. It is helpful to use a screwdriver to pry the Banner Snap Rail (1) open. Fully insert the top edge of the Graphic Banner (3) into the groove of the Banner Snap Rail (1) and shut closed. See Step 3.



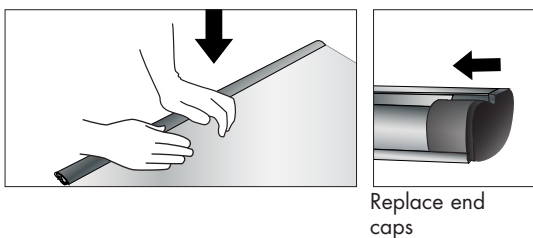
Remove end caps

Open Snap Rail

Insert Graphic then snap shut

Step 3

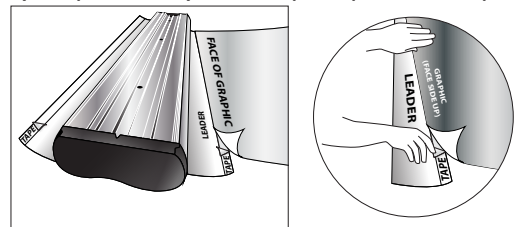
Make sure Banner Snap Rail (1) is shut closed by turning it and Graphic Banner (3) over and pressing down on Banner Snap Rail (1). Replace both end caps.



Replace end caps

Step 4

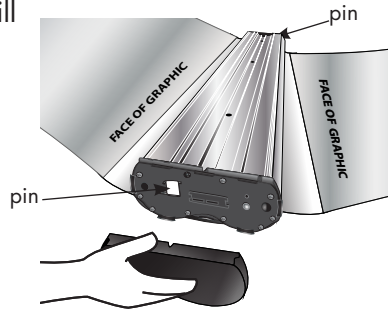
Flip Base Unit (4) upside down. Align the Graphic Banner (3) (printed side up) to the top of the tape leader from the Base Unit (4). Remove the strip of protective paper to expose the adhesive. Firmly and evenly press the Graphic Banner (3) onto the adhesive moving up the edge as you pull away the strip of protective paper.



Banner Install Continued

Step 5

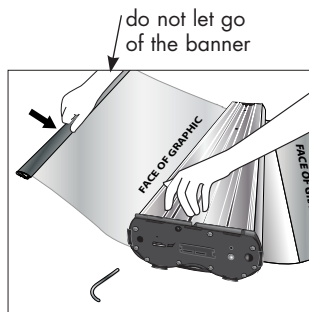
If necessary, repeat for the second Graphic Banner (3). With Graphic Banner(s) (3) now secured to the Base Unit (4) leader(s), remove both end caps to the Base Unit (4). Each end cap will expose the Tension Pin. Tension Pin controls the Banner Graphic (3) it is closest to.



Step 7

Slowly and gently allow the Graphic Banner (3) to roll into the Base Unit (4).

DO NOT let go and allow the Graphic Banner (3) to retract on its own.

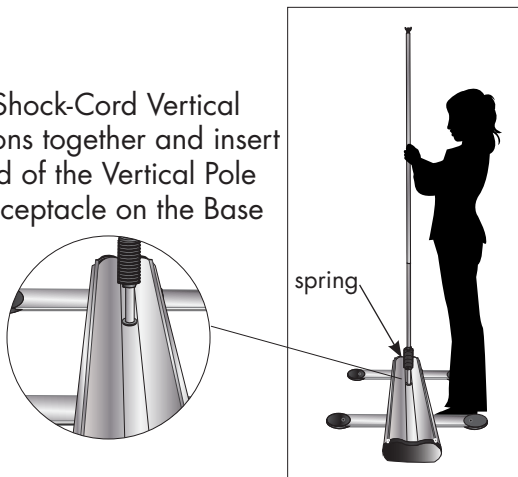


Repeat Steps 5 thru 7 for other side, if necessary.

With Banners fully retracted into the Base Unit (4), simply place the display in the carrying case until you are ready for display set-up.

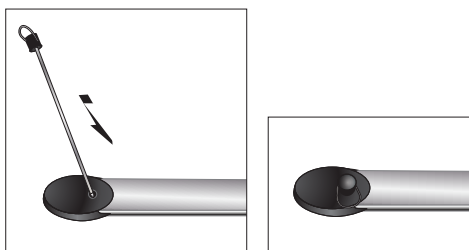
Step 9

Connect the Shock-Cord Vertical Pole (5) sections together and insert the spring end of the Vertical Pole (5) into the receptacle on the Base Unit (4).



Step 11

If displaying outside, retractor can be secured using Stakes (7). Push Stake (7) through hole located on foot (6).

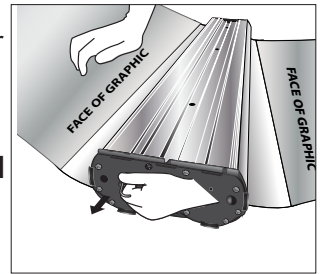


Step 6

HOLD onto the Graphic Banner (3) while slowly removing the Pin from the Base Unit (4).

TENSION HAS NOW BEEN ACTIVATED. DO NOT LET GO OF THE BANNER.

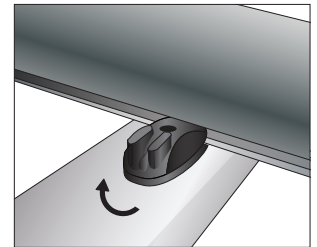
Save pin for future use.



Display Set-Up

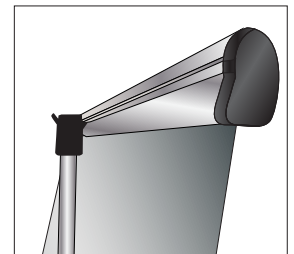
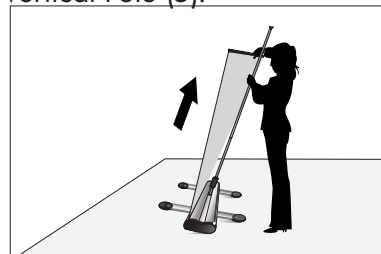
Step 8

Align hole on the bottom of the Base Unit (4) to the post on the center of the foot (6). Turn each knob clockwise to lock foot into place on Base Unit (4). Repeat for second foot.



Step 10

Gently pull the Banner Snap Rail (1) upwards. Connect the back of the Banner Snap Rail (1) into the top of the Vertical Pole (5).



Repeat Step 10 to display second banner.

Storage and Care

Place all product parts into Soft Carry Case (8) and store in a cool dry location.

To clean, wipe with damp cloth.

