

Air Pedestal

Product Parts

- 1 - Inflatable
- 2 - Top
- 3 - Base
- 4 - Graphic
- 5 - Electric Pump
- 6 - Carry Case
- 7 - Rubber Feet (x4)
(with screws and washers)



OPTIONAL ITEM



Optional Items

- 8 - Hand Pump

Setup

Step 1

Remove all parts from Carry Case (6), and set on a clean flat surface. Verify you have the items listed above.

Step 2

Lay the Graphic (4) upside down, slide the Top (2) inside the bottom of the Graphic (4) as shown.



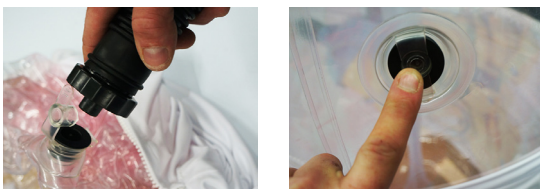
Step 3

Place the Inflatable (1) inside the Graphic (4) with the valve of the Inflatable (1) facing the Zipper.



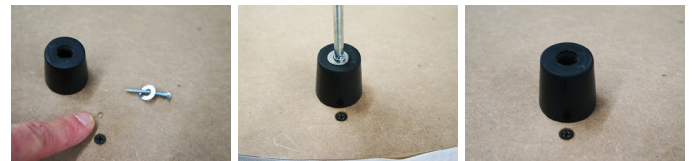
Step 4

Begin to inflate the Inflatable (1) by first opening the outer valve on the bottom. Plug in the Electric Pump (5) making sure the setting is on "Inflate" and insert the hose into the valve on the Inflatable (1). Turn on pump. Inflate until firm. Close the Valve. ***DO NOT OVER INFLATE**



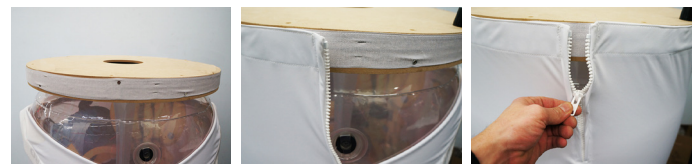
Step 5

Locate the four indentations on the bottom of the Base (3). Using the screws and washers provided, screw the four Rubber Feet (7) into the Base (3) using a standard phillips screwdriver (not included).



Step 6

Set the Base (3) upside down on top of the Inflatable (1). Pull the Graphic (4) up toward the Base (3). Starting at the zipper, attach the loop velcro of the Graphic (4) to the hook velcro on the Base (3). Zip Graphic (4) closed. Turn unit right side up.



Disassembly Instruction

To deflate, zip open the Graphic (4) and pull out the inner plug on the valve. With the setting on "Deflate" on the Electric Blower, suck out the remaining air. Graphic (4) can be left on hardware in storage and transport.



Storage & Care

Place all product parts back in the Carry Case and store in a cool dry location. Recommended for indoor use only. Machine wash on gentle cycle using mild detergent. Line Dry. Do NOT dry clean, Do NOT Iron.